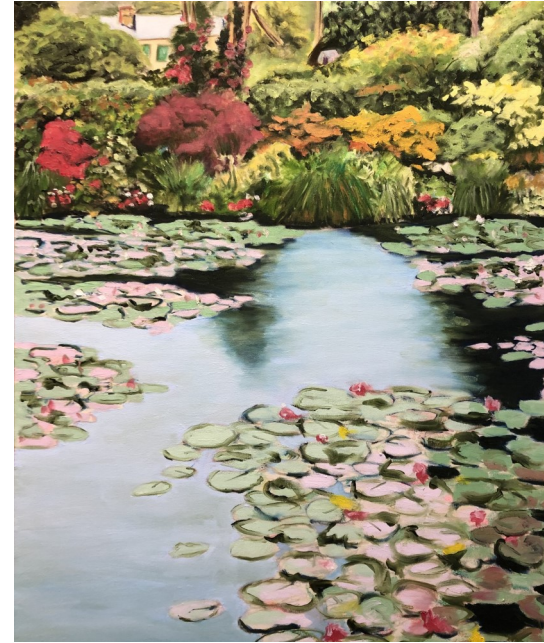


# Kimble Bromley



## **Exhibit Dates:**

September 5 - 29, 2023

*Sponsored by*

*Val & Jerry Harlow*

*and in part by the Tom & Frances Leach Foundation  
and the ND Council on the Arts*

*This exhibit is sponsored in part by*

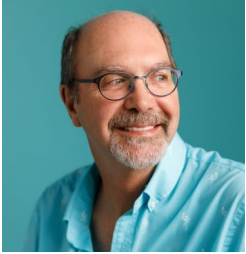
NORTH  
**Dakota** | Council on the Arts  
Be Legendary.™

*and the Tom and Frances Leach Foundation*



Bismarck Art & Galleries Association  
422 East Front Ave  
Bismarck, ND 58504  
701-223-5986

# Kimble Bromley



## Artist Statement

For the past 15 years I have been painting my pond in rural Minnesota. I live on 20 acres made up of 12 acres of woods and an 8 acre pond. There, I paint on location celebrating the light and color I encounter.

In 2019 I had the opportunity to travel to France to study Monet's paintings and to visit his gardens in Giverny. This was an inspirational experience! After letting this adventure simmer for two years, the scenes I encountered there are now coming to life in my paintings. The motifs that inspired hundreds of Monet's most mature work are seen in my paintings. My unique paintings are also filled with color and light as seen in the dynamic compositions. These paintings are my interpretation of the gardens Monet so lovingly created.

Kim and his wife Gretchen live in their home, designed by Gretchen, by their pond just outside Pelican Rapids, MN. Besides his art and seeing something new on the pond everyday Kim is an avid pool player and motorcyclist.

As professor of art at North Dakota State University, Kim teaches painting, drawing and art history. One component of his studio classes involves hypnotizing his students to assist them with their creativity. Kim's interest in hypnosis has led him to research the significance of hypnosis on creativity.

Kim is offering his CREATIVITY ENHANCEMENT WORKSHOP at BAGA on September 30th from 10 am to noon. You can register for the workshop by calling BAGA or stopping by the office.

# Exhibited Artworks

Flowers and Lilies Around the Pond	\$ 2,500.00
Green & Pink Lilies on Monet's Pond	\$ 5,000.00
Light and Lilies at Giverny	\$ 3,000.00
Trees and Clouds Reflecting	\$ 3,000.00
Light on Monet's Pond	\$ 3,000.00
Weeping Willows	\$ 3,000.00
Willows, Bushes and Bridge	\$ 3,000.00
Monet's Home at Giverny	\$ 4,000.00
Red and White Flowers by the Pond	\$ 5,000.00
Trees along the edge of the Pond	\$ 3,000.00
Bridge and Foliage	\$ 5,000.00
Reflections on the Pond	\$ 5,000.00
Two Boats on Monet's Pond	\$ 5,000.00
Ripples and Lilies on the Pond	\$ 5,000.00
Green Pond	\$ 5,000.00
Reflections	\$ 5,000.00
Field by the Pond	\$ 5,000.00
Colorful Lily Pads at Giverny	\$ 5,000.00
Color on the Shore	\$ 5,000.00
Clouds on the Pond	\$ 5,000.00
Two Boats on Monet's Pond	\$ 5,000.00
Ripples on Monet's Pond	\$ 5,000.00
Japanese Bridge	\$ 5,500.00
Reeds and Flowers around the Pond	\$ 5,000.00
Ode to Monet	\$ 5,000.00